



Euphoria

High-Tech build. Handcrafted finish.



Euphoria Collection
Fall 2016 edition



The Euphoria Brand

The word Euphoria means “an intense feeling of happiness and excitement”, and Euphoria Yachts can be regarded as works of art that are the direct result of Sirena Marine’s maturity and commitment. When the company’s ambition to develop a successful brand and product line of luxury sailboats in 2012 joined forces with the 50 year-plus experience of Gèrman Frers, the Argentinean designer who penned his first boat in 1958, the luxury and comfort-oriented Euphoria series was the result. The entire Euphoria yacht range is built using the most advanced technologies and combines a Mediterranean soul with a more Northern sailing mood to offer sailing pleasure at its best. It delivers the perfect melding of spacious exterior living areas, interior comfort, innovative design, finishes and sophisticated, quality materials. The product range currently spans three models: the Euphoria 54, 68 and the new 84 flagship.



“Design process has never been so state of the art. It allow us to strive even harder to produce the ultimate yacht”.

Frers Naval Architecture & Engineering is a design studio with a long family history. It is a reputation that stands three generations. The first design was hand-drawn by Gèrman Frers Snr in 1928 and since that time we have created more than 1,200 designs, from small dinghiest to huge megayachts, production boats to huge investment America’s Cup machines, custom-designed offshore cruisers and racers to advanced-technology power yachts. Each one of our designs is imbued with the unique combination of Frers’ design ingredients: experience handed down over generations, coupled with advanced technology and concepts.



Our philosophy

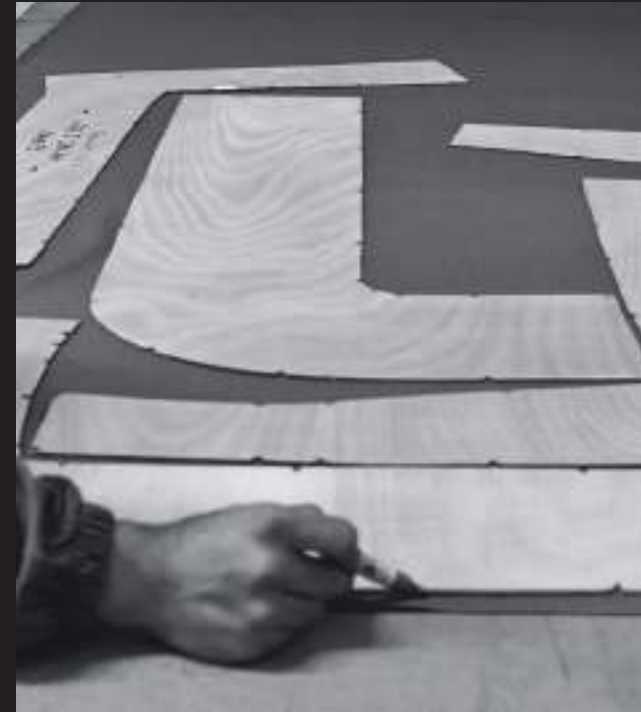
High-Tech build. Handcrafted finish.

Our ambition was to deliver the most spectacularly handcrafted end product on the market by attracting and collaborating with the finest talents on the world stage. Frers Naval Architecture & Engineering from Argentina, UK-based Design Unlimited all work hand-in-glove with our team which includes nautical sector executives that bring an extraordinary wealth of experience to the mix.



Technology and Craftmanship

CNC mould milling, vacuum infusion technology and leading-edge design and simulation software ultimately give way to our expert craftsmen who ultimately turn our owners' dreams into tangible reality. Furniture, upholstery, teak elements and hardware made are all in-house to guarantee complete control and a speedy response to owners' requests.



 Our mission

Enabling privileged experience to our customers with our foremost product excellence and customer focused approach.

▶ Details of excellence

All finishes and fabrics bear the hallmark of elegance, reflecting each individual owner's taste and sailing philosophy. The highest quality details feature throughout the yachts. In the main structure, in the interior, and in the countless little touches honed to make the sailing experience infinitely more pleasurable. This focus on perfection has turned Euphoria sailing yachts into contemporary masterpieces that are both a joy to own and a pleasure to sail.



An abstract geometric composition featuring a large, light gray triangle pointing downwards, set against a dark gray background. The triangle is positioned in the lower right quadrant of the frame. The overall aesthetic is minimalist and modern.

Euphoria 54



▶ The Euphoria 54 yacht concept

Technical perfection is evident in the elegant lines of the Euphoria 54 which are fluid and modern yet classic – the hallmark of the yachts designer and internationally acclaimed naval architect German Frers. An outstanding bluewater cruiser capable of effortless performance in all weather conditions, the Euphoria 54 is a stylish ocean-going yacht. The clean, efficient deck is laid out using clever design features that make the yacht ideal for short-handed sailing or with the smallest of crews.

The sail plan is easy to handle, with primary control lines all led back to the helm position. With the mainsheet situated forward of the cockpit, crew members benefit from greater safety when moving around the cockpit. The easy handling never means compromised performance. Twin wheels control the advanced JP3 steering system with self-aligning bearings. Combined with the customised carbon-fibre rudder blade, this makes for very smooth, positive steering. Once you take the wheel you can feel just how beautifully balanced she is. The Euphoria 54 is the perfect blend of form and function. She's built using advanced vinylester resin-injected moulding methods to ensure an ultra-strong yet lightweight hull and deck.

Everywhere you look, this is a design that sets new standards: in the main structure, in the interior, and in the countless little touches that combine to make your sailing experience infinitely more pleasurable. In all areas she's been fitted out to the highest standards - her Harken electrical winches are widely considered best-in-class, for example. This endless quest for perfection makes the Euphoria 54 a contemporary masterpiece, both a joy to own and a pleasure to sail.

The Euphoria 54 designer statement

The Euphoria 54 is the first in an exciting new range of performance cruising yachts.

"My aim was to create a contemporary, sea-kindly and safe 54-footer that combines excellent performance with the highest levels of live-abroad luxury. The wedge-shaped, powerful hull form and ergonomic deck layout offer a very good balance between performance, ease of handling, aesthetics and comfort.

The clean, efficient deck layout - free of halyards and lines - is a particular hallmark of ours. The mainsheet arrangement runs forward of the contemporary hatch, well clear of the cockpit and a great safety feature. Other lines run aft in halyard channels hidden within the deck, leading to jammers port and starboard. Winches are positioned close to the helmsman to enable simple short-handed control when required. The sail plan, controlled by a runner-free, swept-back spreader rig, is available with a choice of aluminium or carbon-fibre spars, together with either slab or roller-furling options depending on your intended use for the boat. For the performance-minded owner, the slab-reefed mainsail is cut with an efficient square-top head for maximum power. However, the Euphoria 54 was primarily designed for cruising and charter sailors who appreciate and enjoy the easy-handling characteristics of a design that delivers great performance and comfort in equal measure".

Gèrman Frers













Main saloon



Main saloon





Main saloon





Galley





Master cabin



Master cabin head





Guest cabins



Technical Specifications

TECHNICAL DATA

Length overall	16.46 m
Length waterline	14.96 m
Max Beam	4.9 m
Draft	2.4 m / 3.0 m
Displacement	19,500 kg
CE certificate	Category A

Exterior styling & concept	Frers Naval Architecture & Engineering
Interior styling & design	Design Unlimited
Hull design and naval architecture	Frers Naval Architecture & Engineering

SAIL AND RIGGING SPECIFICATIONS

I	22,00 m
J	6,27 m
P	21,3 m
E	6,8 m
Main sail Area	95 m ²
Jib Area	71 m ²



LOWER DECK STANDARD



LOWER DECK OPTIONAL



An abstract geometric composition featuring a large, light gray triangle pointing downwards, set against a dark gray background. The triangle's top vertex is positioned in the upper right quadrant, while its base extends across the bottom of the frame. The overall aesthetic is minimalist and modern.

Euphoria 68



The Euphoria 68 yacht concept

The special Euphoria style and elegance are easily recognisable in this new larger model. Germán Frers developed the design for the new Euphoria 68 along the same modern lines as the Euphoria 54. A deck with large open areas and a spacious cockpit make it perfect for sailing or relaxing.

The beautiful, comfortable interior created in association with Design Unlimited includes three options for its three-cabin arrangement to meet the needs of the more demanding families and charter clients. There is also the choice of a forward or aft owner's cabin.

A twin-rudder configuration has been introduced to this larger model in the Euphoria range. Thanks to its rig and carbon fibre spars, it is comfortable to sail, easily handled and perfect for long-range cruising. Courtesy of a comprehensive spec, the Euphoria 68 also offers outstanding value in the luxury home-from-home blue water cruising segment.

▶ The Euphoria 68 designer statement

"This new Euphoria model is an evolution of the smaller 54 foot sloop and represents a new logical next step up in displacement, interior volume and performance from the well-proven 54.

The hull follows a similar concept to its smaller sister, although this time and, in view of the larger size, we decided on a twin-rudder configuration in combination with a standard deep keel, plus a fixed shallow draft option. The hull is powerful and the displacement distributed along a full length waterline, resulting in a fast, comfortable, sea-kindly yacht. Half a dozen options are offered for the three-cabin plus crew interior layouts developed by Design Unlimited, both with the owner's cabin aft or forward. The semi-raised main saloon is very ample and well connected to the cockpit. Side hull windows provide natural light to all cabins.

The deck layout is clean and simple with a relatively short superstructure, large flat surfaces forward of the mast, a very large cockpit including a permanent table and easily accessible winches for sail control. The aft part of the cockpit opens to the sea as a bathing platform which has access to the lazarette and dinghy storage area.

The rig is modern and efficient, with a triple set of swept-back spreaders on a carbon fibre mast and boom. A hydraulic roller furling boom option would be available for ease of handling and reefing. A 160 hp will propel the 68 at a speed in excess of ten knots. A diesel generator is located amidships in the engine compartment".

Gèrman Frers

















Main saloon





Main saloon





Master cabin



Master cabin
Master cabin head





Guest cabins





Crew quarter



Technical Specifications

TECHNICAL DATA

Length overall	21.04 m
Length waterline	19.53 m
Max Beam	5.84 m
Draft	3.80 m
Displacement	32,000 kg
CE certificate	Category A

Exterior styling & concept	Frers Naval Architecture & Engineering
Interior design	Design Unlimited
Hull design and naval architecture	Frers Naval Architecture & Engineering

SAIL AND RIGGING SPECIFICATIONS

I	29.95 m
J	8.1 m
P	27 m
E	8.5 m
Main sail Area	150 m ²
Jib Area	117 m ²



LOWER DECK LAYOUT A



LOWER DECK LAYOUT B



LOWER DECK LAYOUT C



An abstract geometric composition featuring a large, light gray triangle pointing downwards, set against a dark gray background. The triangle's top vertex is positioned in the upper right quadrant, while its base extends across the bottom of the frame. The overall aesthetic is minimalist and modern.

Euphoria 84



Preliminary concept

▶ The Euphoria 84 yacht concept

This new top-of-the-line 84' Euphoria dream ship is a sophisticated design to be built using the latest technology available for double-purpose yachts. She will turn heads wherever she sails thanks to her stylish looks and innate elegance.

Observing her slender hull lines, the connoisseur will immediately become aware of her potential for speed and sailing fun as well as her inherent sturdiness for cruising the world in safety. An efficient T-shaped composite keel in combination with twin rudders are part of this package.

The interior layout arrangement is a four-cabin affair including an owner's cabin aft and a VIP cabin at the forward end of the saloon. The very large saloon has a library/TV at the front end. The double crew cabin is located at the bow adjacent to the galley.

The flush deck layout is clean and simple and there are large deck areas to relax. The guest cockpit is separated from the steering and sail handling positions by an ample semi-raised sun bathing surface. As an option, the main cockpit can be equipped with a retractable Bimini for sun protection. Like her smaller sisters, she is provided with an ample bathing platform.

The large state-of-the-art carbon fibre rig will generate all the necessary horsepower to win races and a removable heavy weather staysail will be provided to simplify the sail reduction scheme.

Gèrman Frers



Main saloon - preliminary concept



Main saloon - preliminary concept



HOE LAB
yacht&design

Main saloon - preliminary concept



HOE LAB
yacht&design

Main saloon - preliminary concept



Main saloon - preliminary concept

DESIGN STUDIO SPADOLINI



Main saloon - preliminary concept

DESIGN STUDIO SPADOLINI



DESIGN STUDIO SPADOLINI

Master cabin - preliminary concept



DESIGN STUDIO SPADOLINI

Master cabin - preliminary concept

Technical Specifications

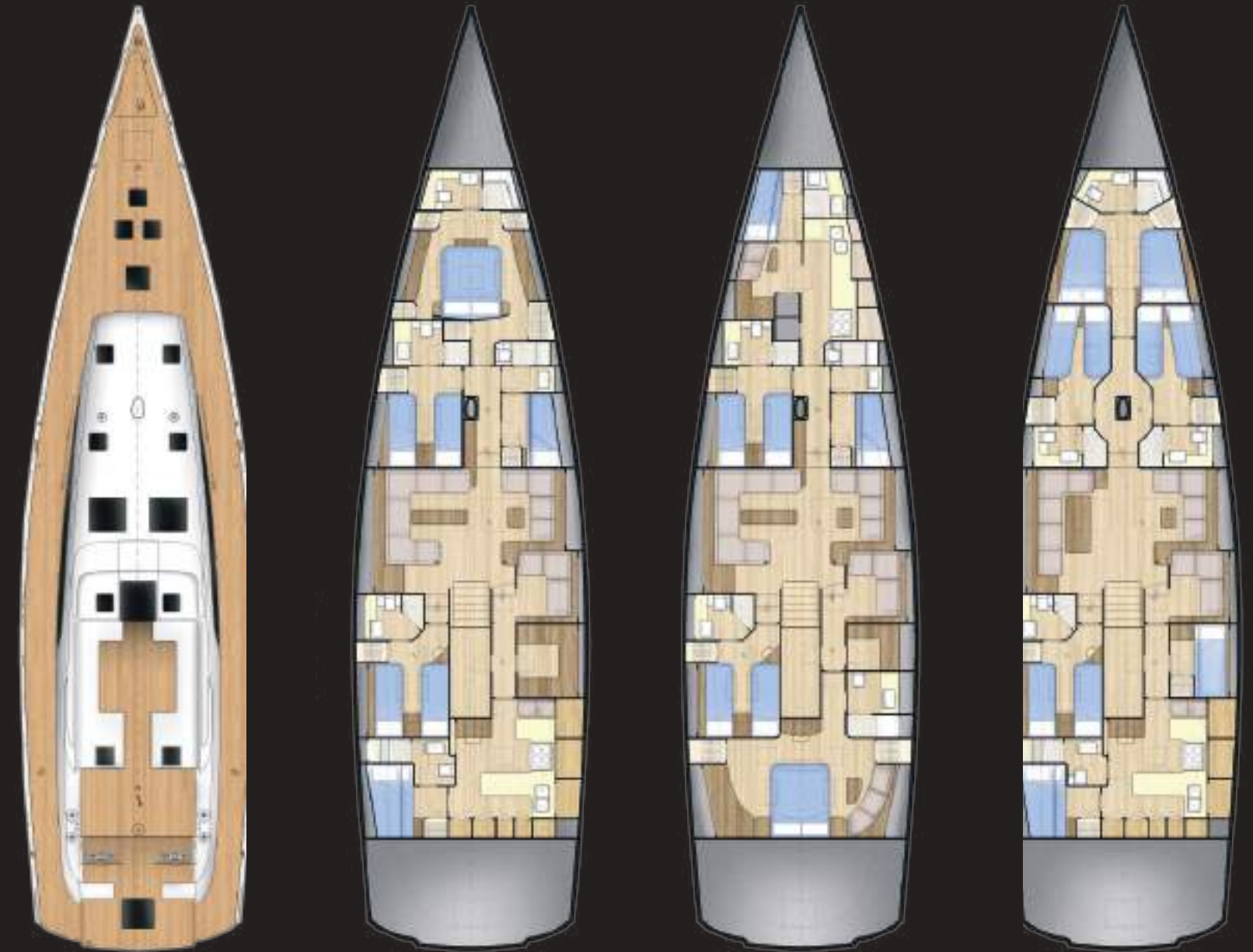
TECHNICAL DATA

Length overall	25.60 m
Length waterline	23.36 m
Max Beam	6.30 m
Draft	4.20 m
Displacement	45,000 kg
CE certificate	Category A

Exterior Design Frers Naval Architecture & Engineering

SAIL AND RIGGING DATA

I	33.30 m
J	9.70 m
P	31.70 m
E	9.80 m
Main sail Area	200.10 m ²
Jib Area	163.14 m ²



Preliminary layout



Sirena Marine

Founded in 2006 by Kıraca Holding, Sirena is a prominent manufacturer in both the yachting and automotive sectors.

An initial agreement with the world-renowned Italian Azimut-Benetti Group evolved into a partnership in 2008 and has led to Sirena Marine becoming a top class yacht builder with over 250 motoryachts and 100 sailboats supplied under the Azuree and Euphoria brands thus far, in addition to the production and design of three successful Azimut Yachts models. The yard's on-going collaboration with Azimut-Benetti now also encompasses the building of Magellano 43 at its recently-extended 155,000 square metre facility.

Sirena Marine's vision is to develop internationally-renowned yachting brands by drawing on the talents of world-leading designers of the likes of Germán Frers, Rob Humphreys, Tommaso Spadolini and Giovanni Ceccarelli and combining their skills with its own hard-won manufacturing expertise and considerable engineering knowhow. This approach has already borne fruit in Sirena's award-winning Azuree sailing brand, the outstanding Euphoria luxury sailing series and the company's brand-new Sirena motoryacht. Having discovered that its expertise could be successfully applied beyond the yachting sphere, Sirena also recently expanded into producing composite and stainless components for the rail, automotive, defence and heavy equipment sectors. The company's signature commitment to quality and worldwide brand development has attracted clients from around the globe, not least Europe, the US, Australia and Japan.

Shipyard and production plant

State-of-the-art technology meets unparalleled handcrafting capabilities. All Sirena Marine product lines are manufactured in the company's own facility, where over 550 employees – including 80 engineers – work in a 155,000 square metre area of which 35,000 square metres are covered. By keeping key manufacturing activities, such as stainless steel, furniture, teak and upholstery as well as all composite parts, in-house, the company has continued to build on its experience and skills base, with the result that it is now one of the leading yacht builders in the Mediterranean area.

All Azuree hulls and decks are built using the vacuum infusion method, allowing Sirena Marine to combine today's top technology with consolidated yachting craftsmanship principles.

Tools and processes are co-engineered with worldwide suppliers, while 400 years of handcrafting experience and passion in yacht building guarantee meticulous execution and detailing.





Sirena Marine | Abdi Ipekçi Cad. Ada Apt. No: 22/18 K:5 | Ni anta ı / Istanbul 34367
Pbx: +90 212 219 74 74 | Fax: +90 212 219 15 82 | www.euphoriayachts.com.tr